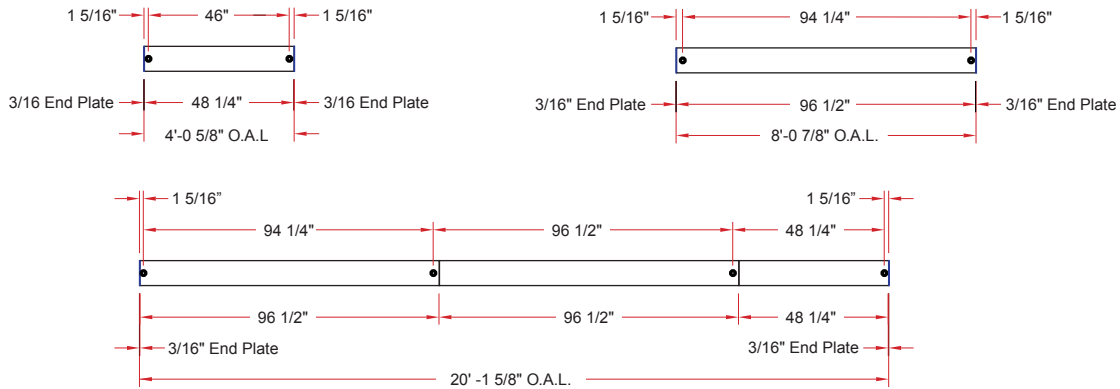
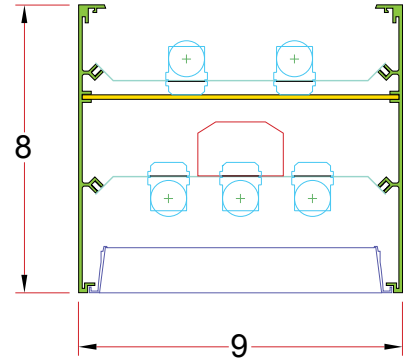


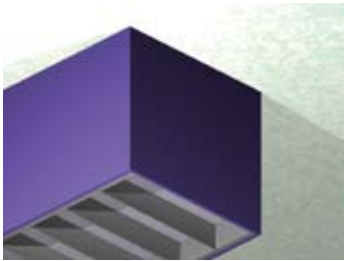
8 x 9/SQU DIP



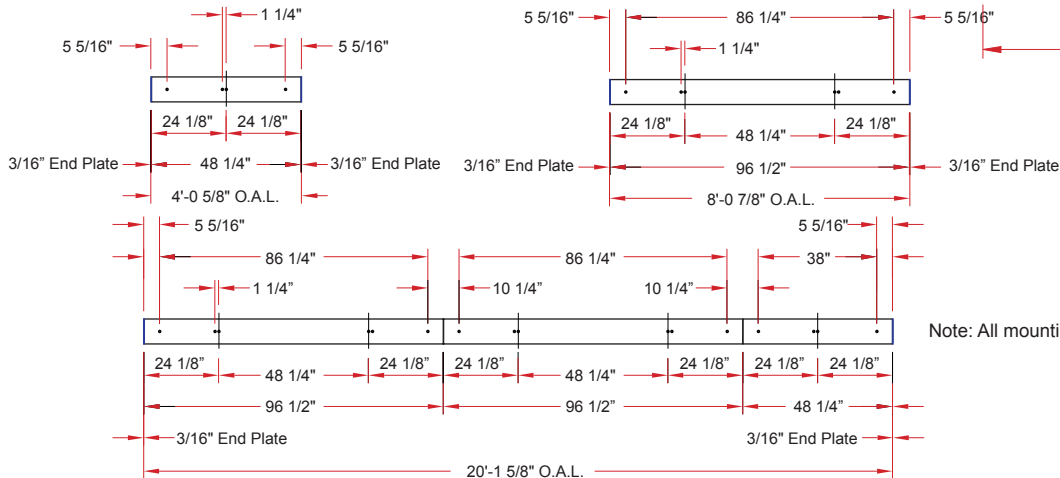
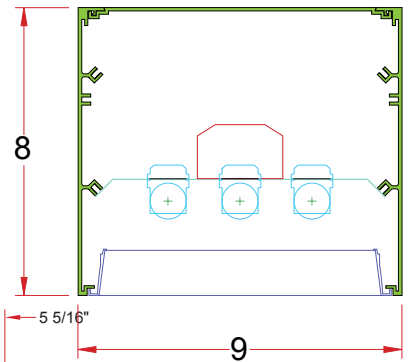
Lighting: Direct/Indirect
Mounting: Pendant or Cable
Length: Stocked up to 8'
Connectors: Consult Factory For Details
Diffuser: Parabolic Aluminum Louver
Finish: Mill Finish
Options: Consult Factory



8 x 9/SQU DS



Lighting: Direct
Mounting: Surface
Length: Stocked up to 8'
Connectors: Consult Factory For Details
Diffuser: Parabolic Aluminum Louver
Finish: Mill Finish
Options: Consult Factory



Note: All mounting holes are 7/8" dia. K.O.s