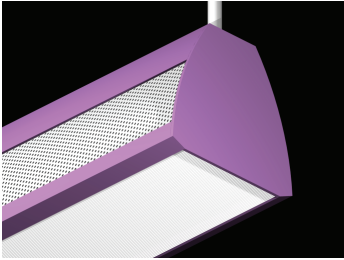
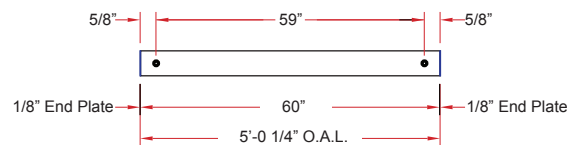
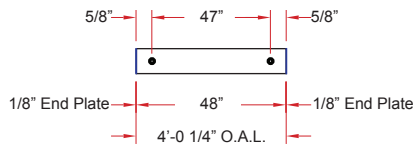
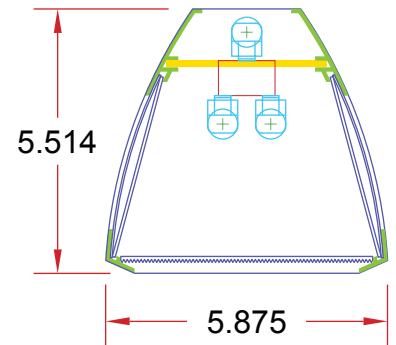


# The Pamela III DIP



**Lighting:** Direct/Indirect  
**Mounting:** Pendant or Cable  
**Length:** Stocked up to 8'  
**Connectors:** Consult Factory  
**Diffuser:** Perf Sides & Lay-In Lens  
**Finish:** Mill Finish  
**Options:** Consult Factory



For runs, fixtures are joined end plate to end plate.  
Consult factory for details.